

# BREYE Release Notes

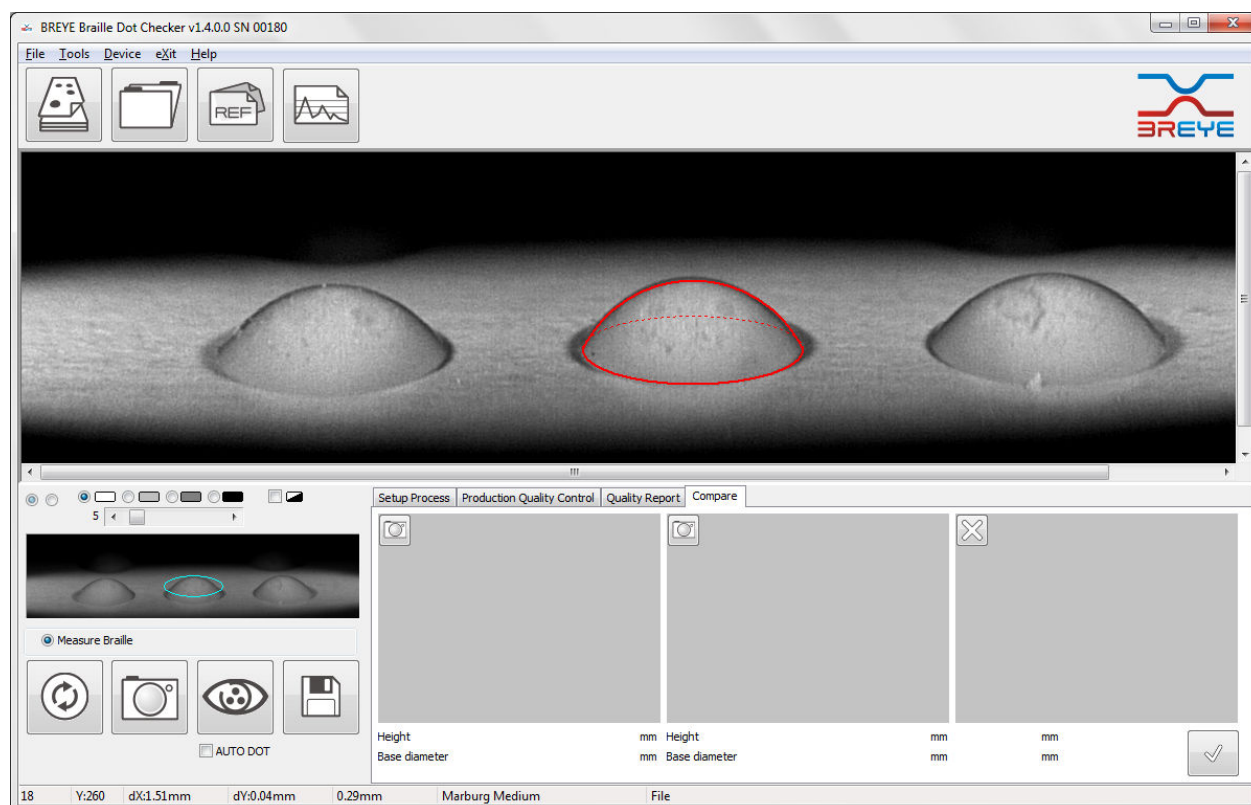
BREYE v1.4.0 .....	1
BRAILLE DOT COMPARISON.....	1
BREYE v1.3.1.0 .....	3
AUTO DOT Function .....	3
BREYE v1.1.12 .....	4
Easy positioning improvements.....	4
Easy brightness adjustments.....	4
Easy dot selection and adjustment.....	5
Dot shape type makes dot outlining easy.....	7

## BREYE v1.4.0

### ***BRAILLE DOT COMPARISON***

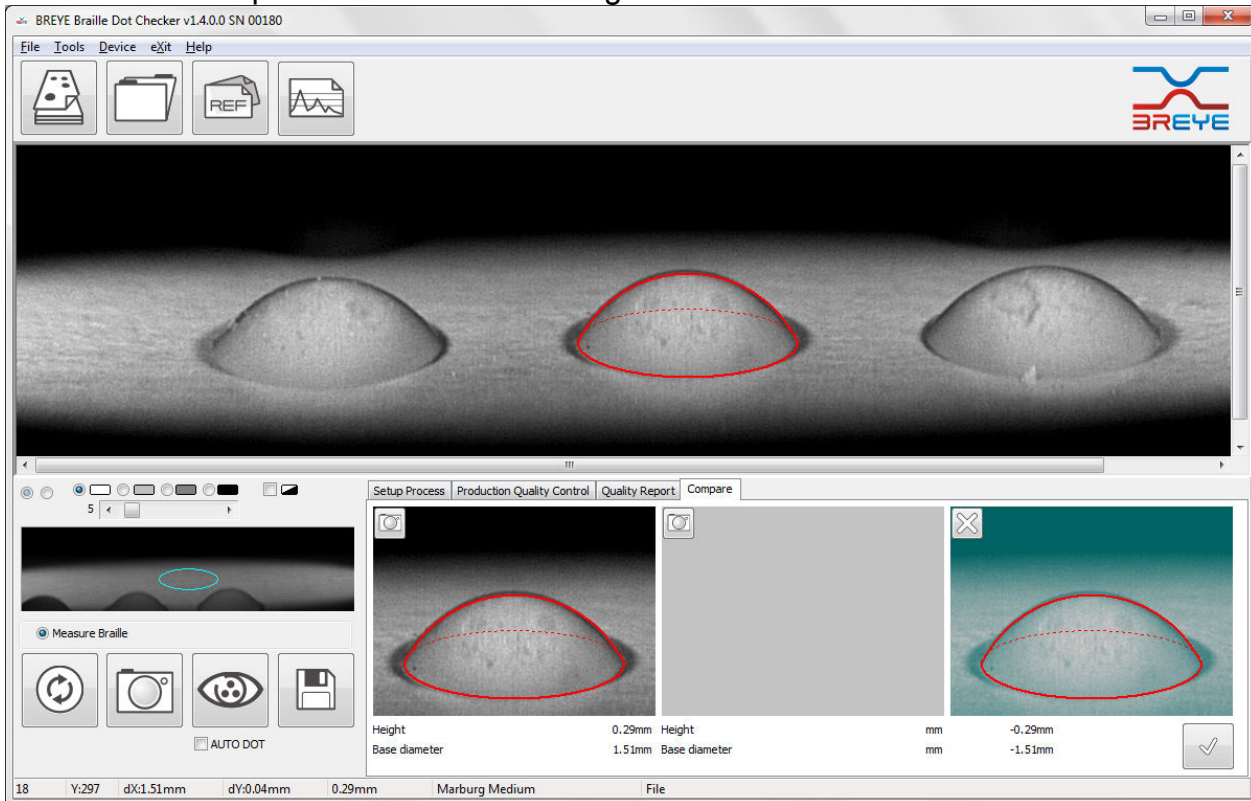
The new Braille Dot function for comparison of single dots can be used to detect and document variations in dot shapes, for example on printed dots in print direction compared to cross print direction.

Capture an image and outline the dot in the center of the image.





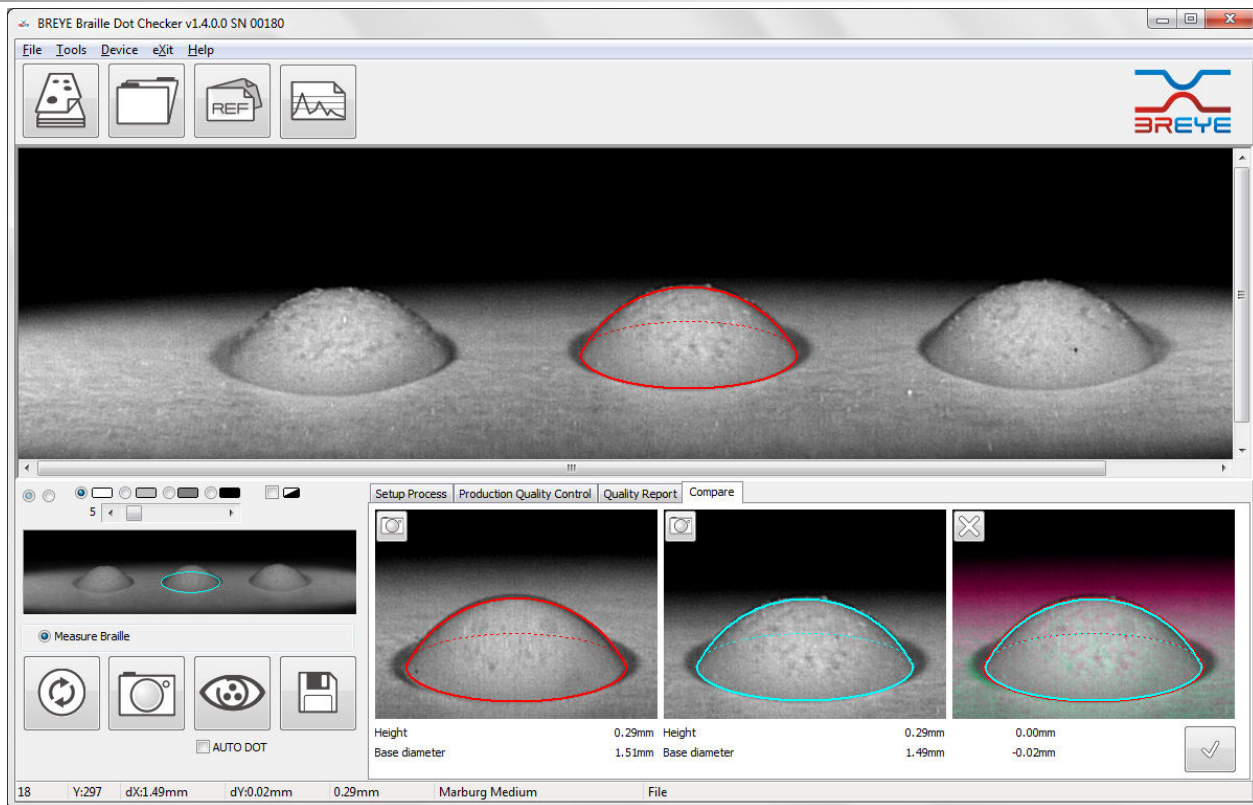
Click the capture Icon of the first image.



Capture the next image and outline again the dot in the center.



Click the capture Icon of the second image.



The third image automatically will show the differences.



Click the report icon to create a PDF report.

## BREYE v1.3.1.0

### *AUTO DOT Function*



Check the AUTO DOT selector or click the AUTO DOT icon after a reading to fine tune the measurement result. The dot still needs to be outlined manually, but the software automatically searches the real edge close to the operators outlining. This makes the measurements less user dependent.

## BREYE v1.1.12

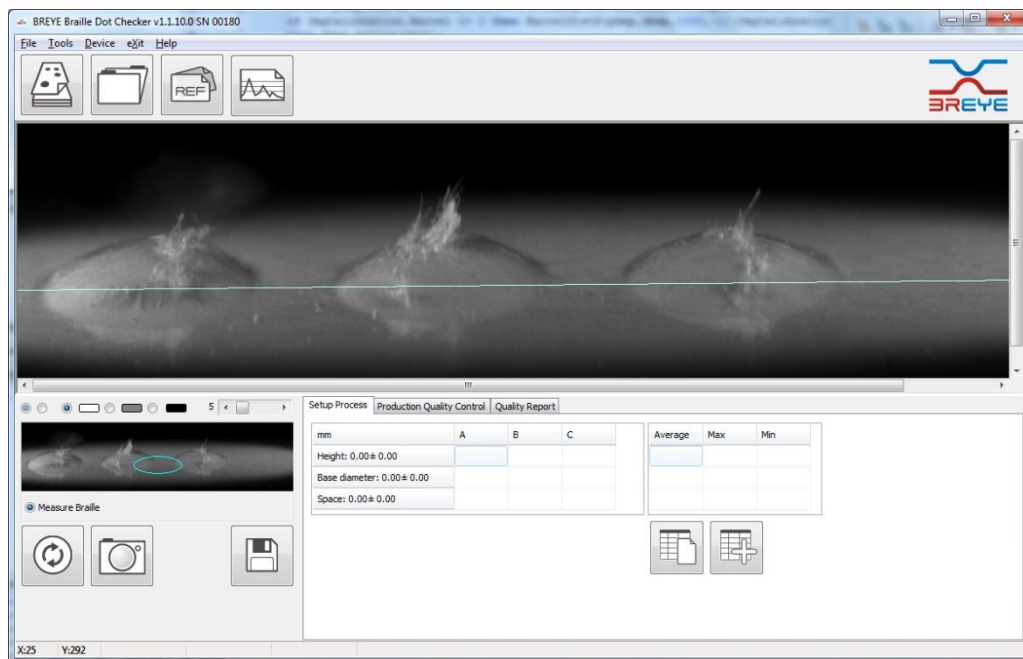
Version v1.1.12 improvements are focused on faster, more repeatable and more precise positioning of the device to obtain higher quality images. Further the measurement possibilities have been improved by additional fine tuning functions to outline the Braille dot with high precision.

### ***Easy positioning improvements***

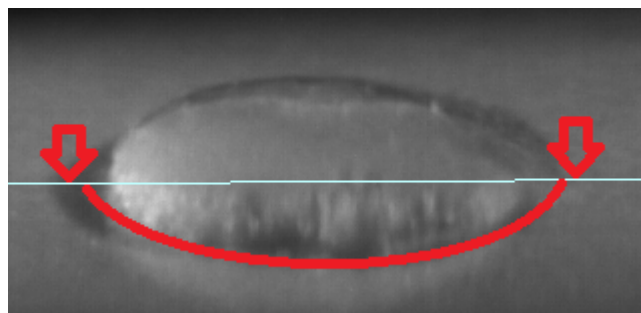


The live image can be displayed in the main window by clicking the preview icon.

A blue line displays the optimal position for the alignment of the braille dots that should be measured. This feature helps the operator to easily bring the image in focus.

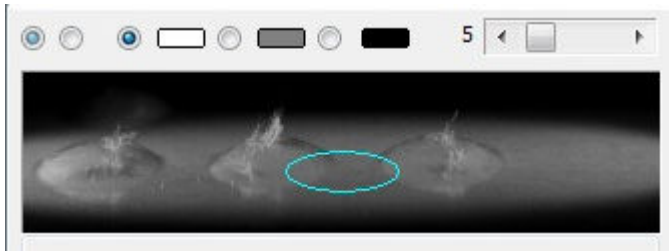


Align your dots such as the blue line goes across the center of the base of the dots



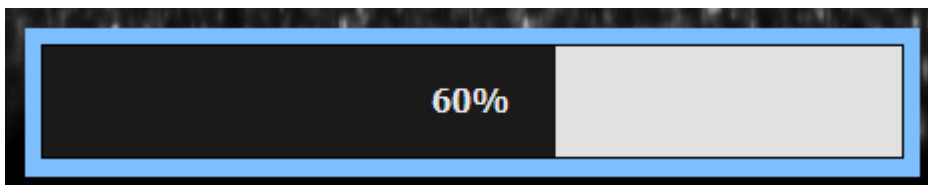
### ***Easy brightness adjustments***

Next to the brightness ruler now there are pre-defined settings for bright (white), colored (gray) and dark (black, dark blue, dark green) samples, that can be selected by a simple click on the proper symbol. The brightness ruler is still available for fine tuning of the brightness.



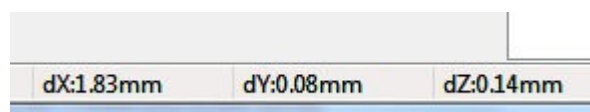
In case of dark samples there will not be available the blue positioning line because the simple preview images does not show enough details.

The settings are changing the speed of image capture. In order to advice the operator about the status there has been introduced a progress bar information. Do not move the BREYE until 100% of the capture procedure has been completed.

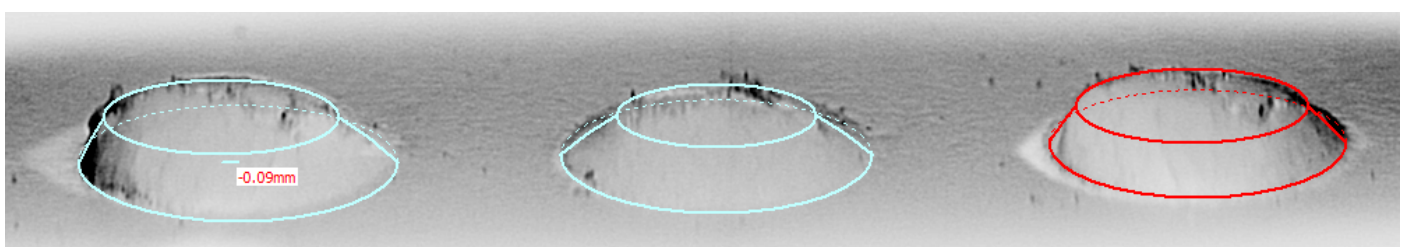


### ***Easy dot selection and adjustment***

The actual base dimensions and the actual height is displayed in real world dimensions in the status bar at the bottom of the window

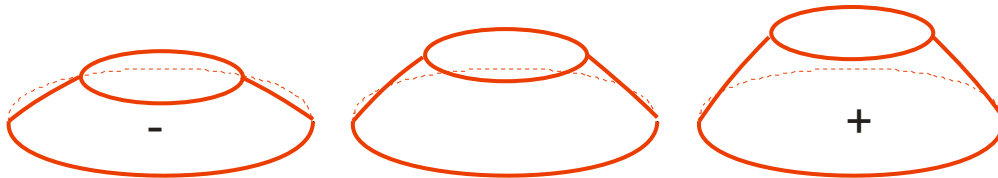


The most recently measured dot is the actual dot and outlined in red color. The inactive dots are outlined in blue color. An inactive dot can be made the active dot by simply clicking on the dot.

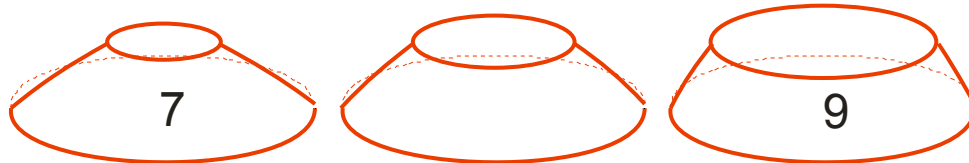


The active dot dimensions can be adjusted using the num pad of the key board in version 1.1.12:

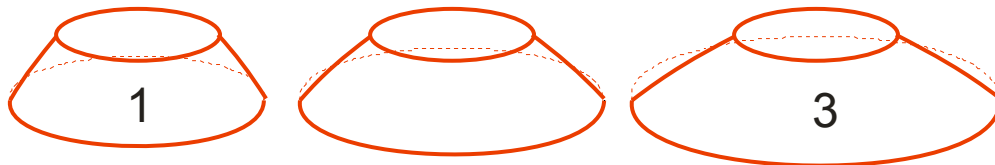
- '+' increase the height of the active dot
- '-' decrease the height of the active dot



- '9' increase the size of the plateau
- '7' decrease the size of the plateau

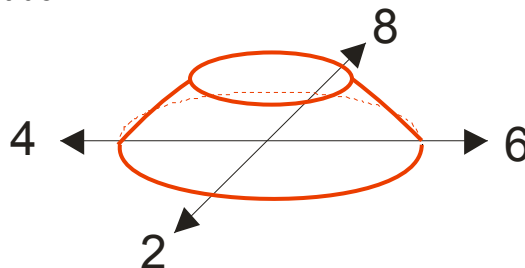


- '3' increase the size of the base
- '1' decrease the size of the base



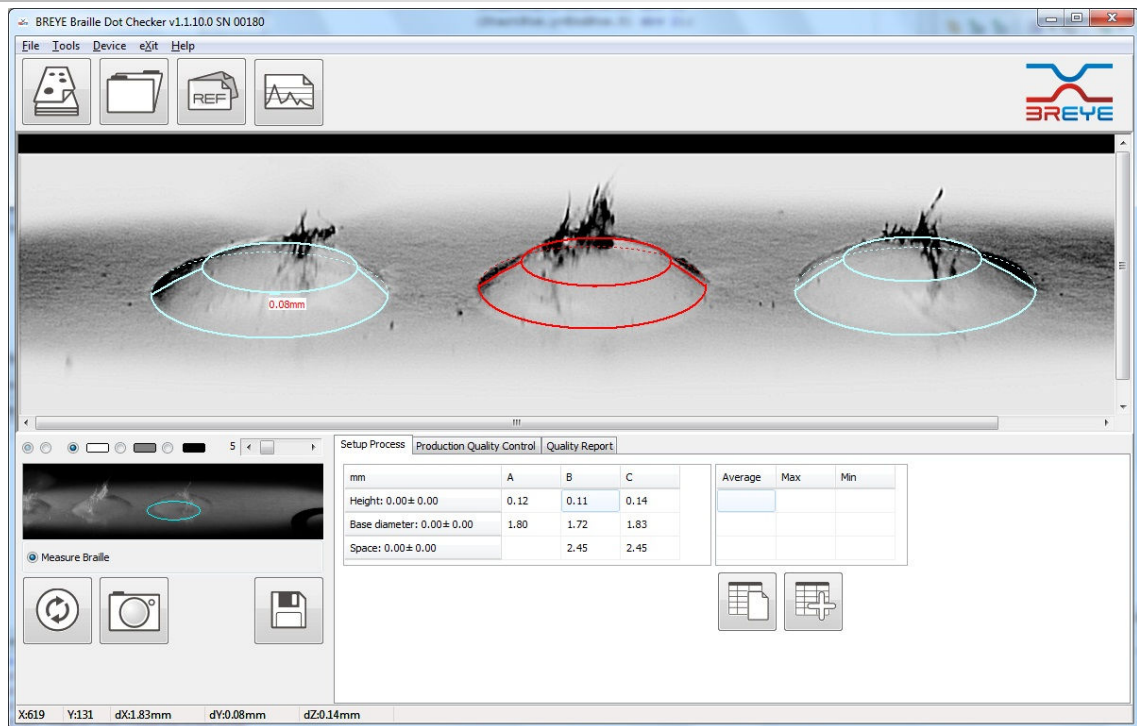
Use the num pad to adjust the position of the outlined dot until it perfectly matches the captured dot

- '4' move the active dot to the left
- '6' move the active dot to the right
- '8' move the active dot up
- '2' move the active dot down



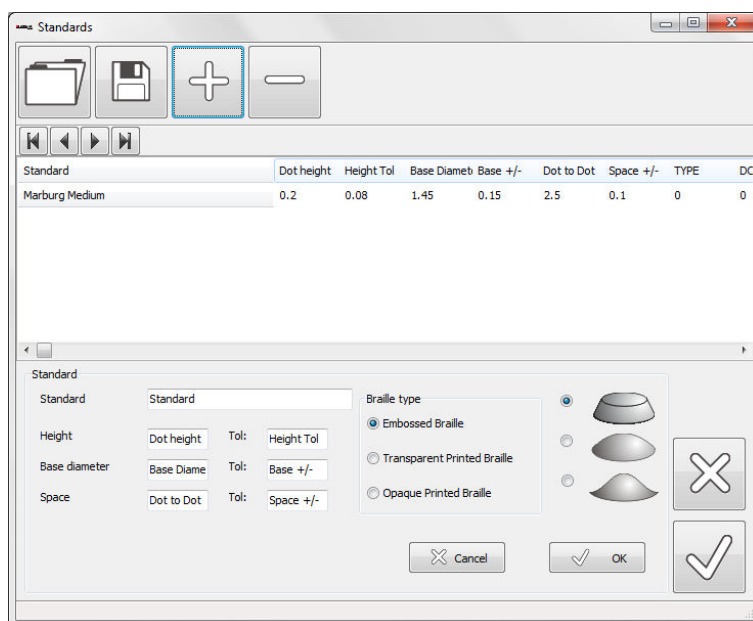
The height and the space are adjusted automatically in the Setup Process table as well as in the Production control table.





## Dot shape type makes dot outlining easy

The reference library has been enhanced by a specification for the dot Shape. Every single reference can have one out of 3 different dot shapes:



Accubraille dot shape



Die cutter with counter plate or printed braille



Die cutter without counter plate

