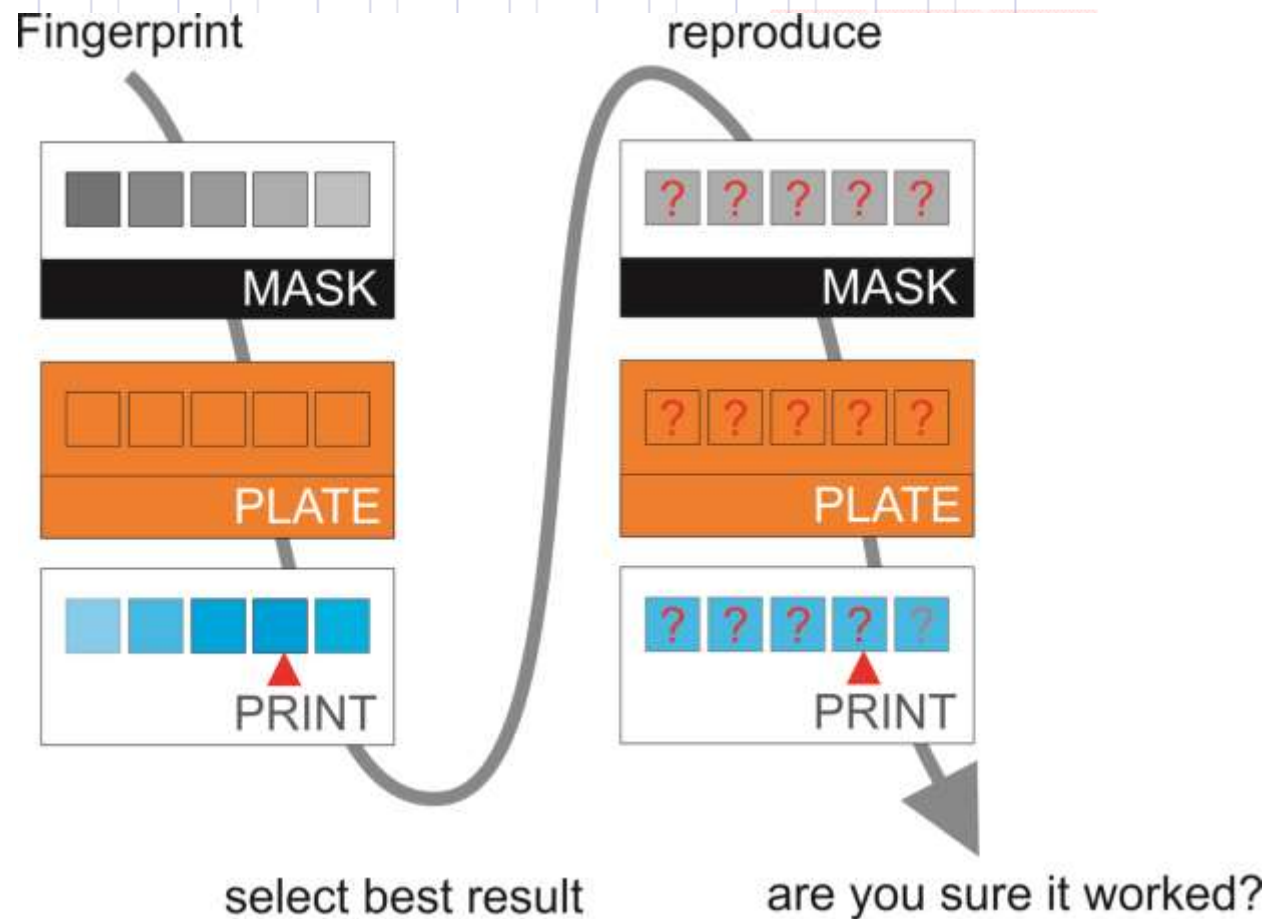


## FAG FLEX<sup>3</sup>HR

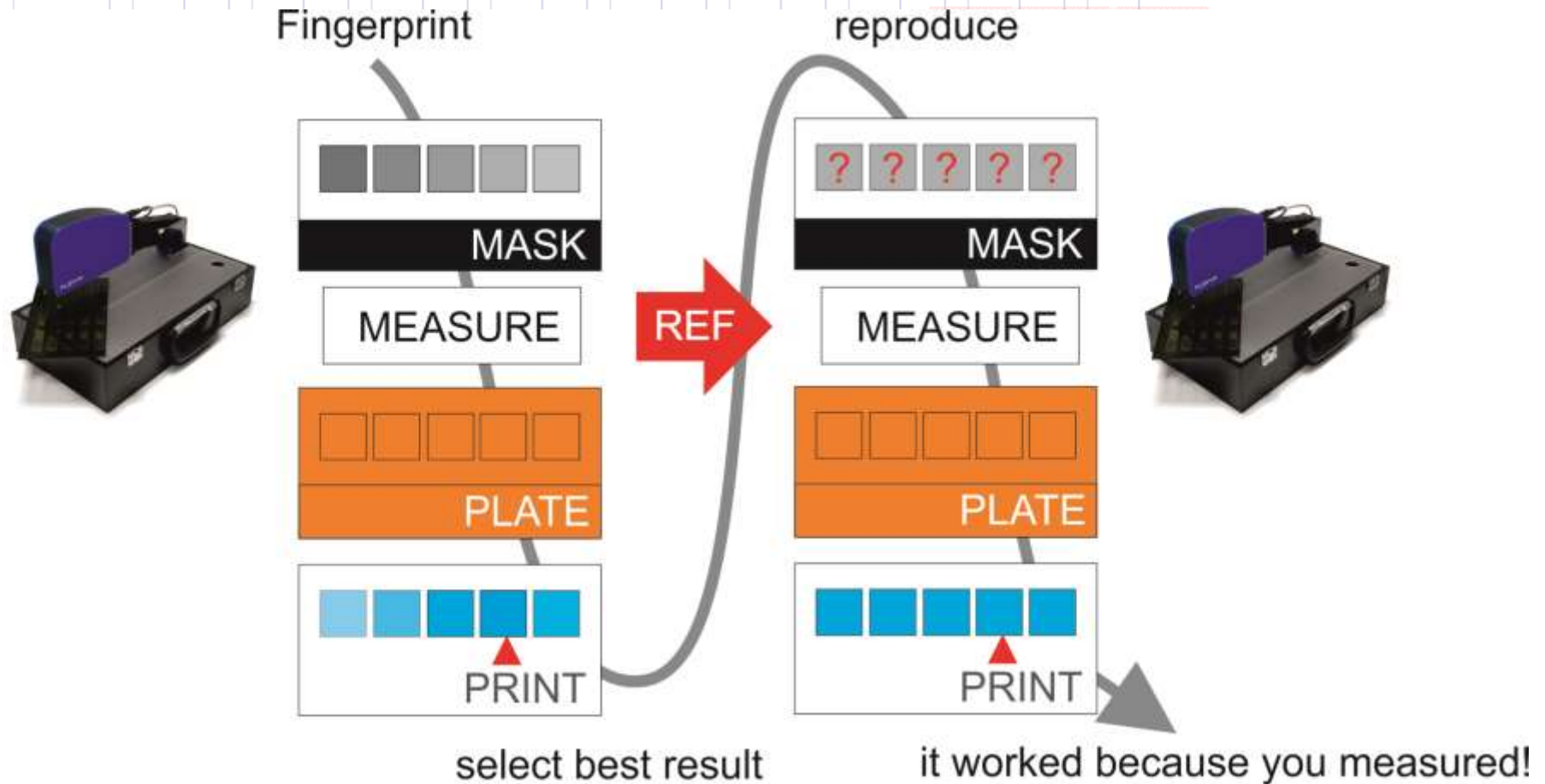
High resolution measurement  
at 43'000ppi



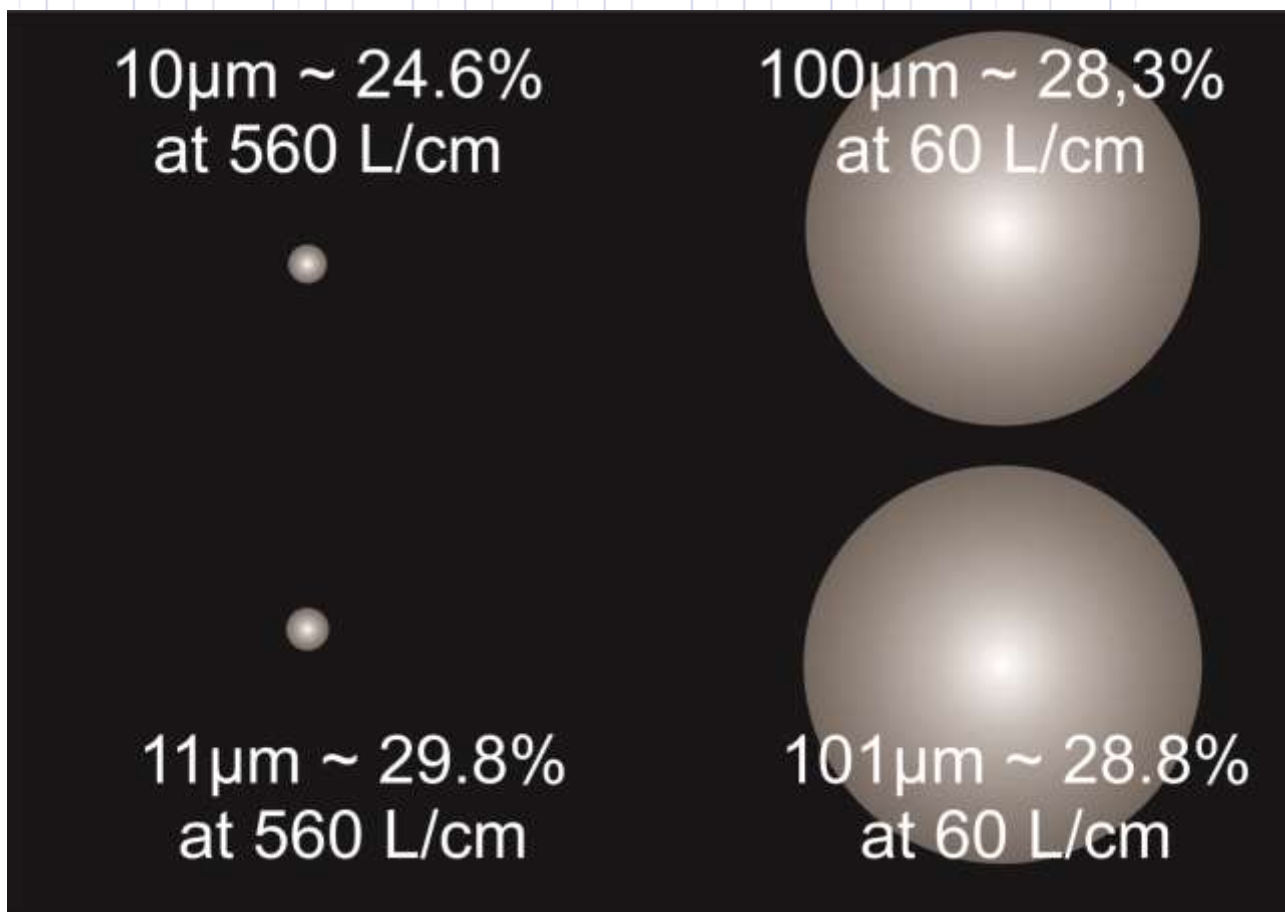
# Micro Structures on Solids to improve the Ink Transfer and the Solid Quality



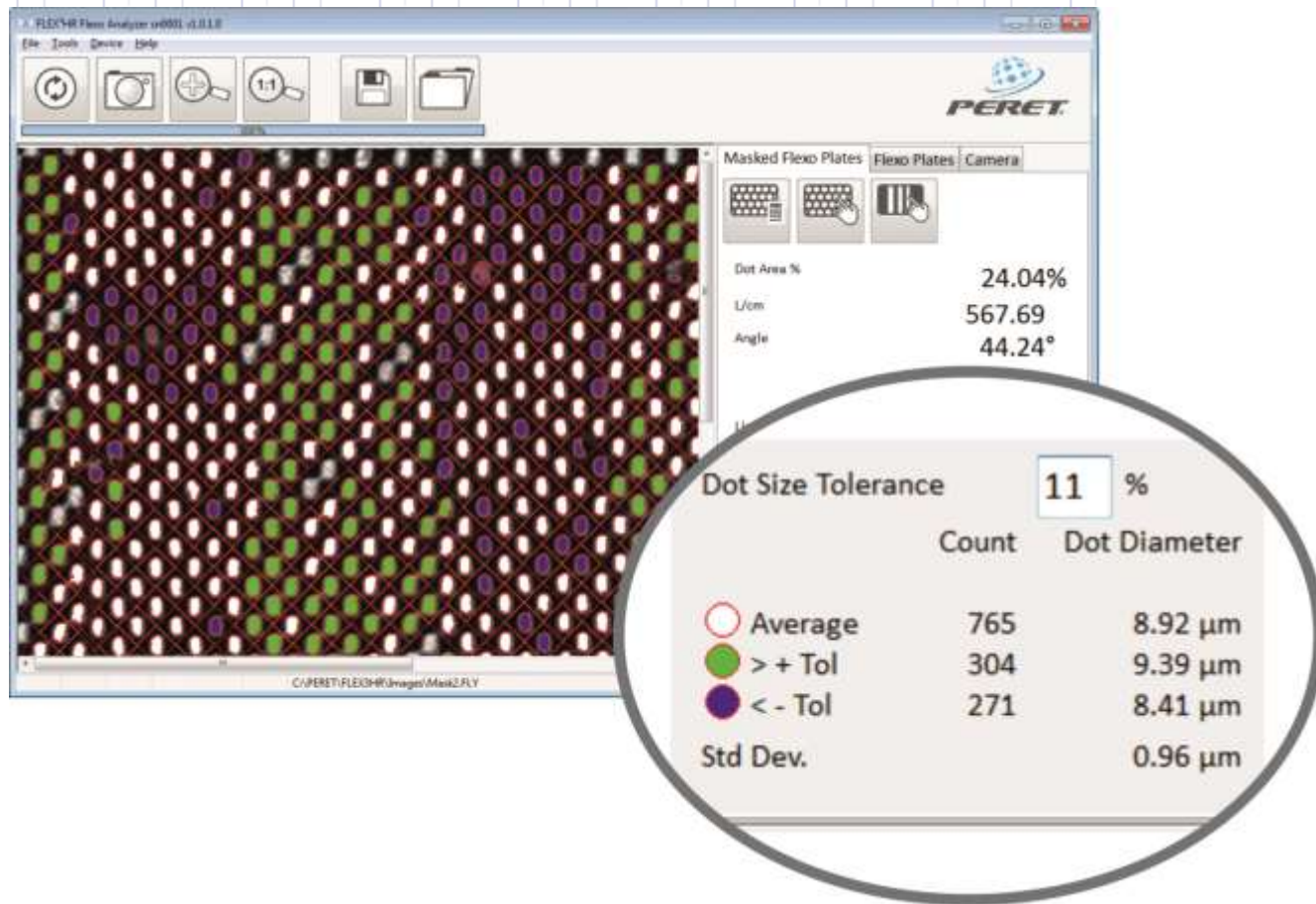
# Reproduce consistently your Solids by controlling the Imaging of the Micro Structures on engraved LAMS



# The Impact of 1 micron: The physical variations in size of Dots are directly linked to its overall size

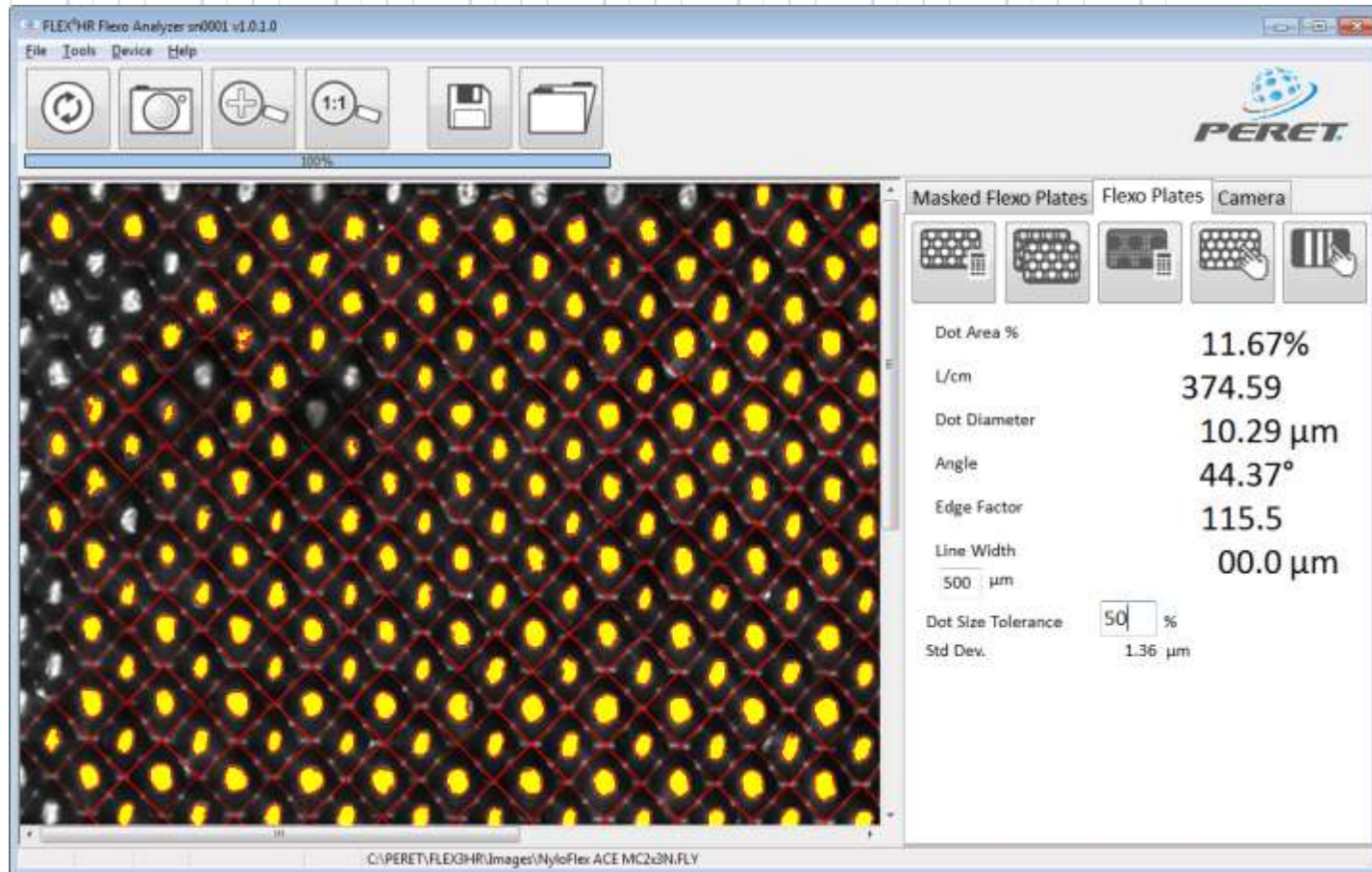


# The Impact of 1 micron. The Solid shows deviations in Dot Size of approx. 5% inside one single patch

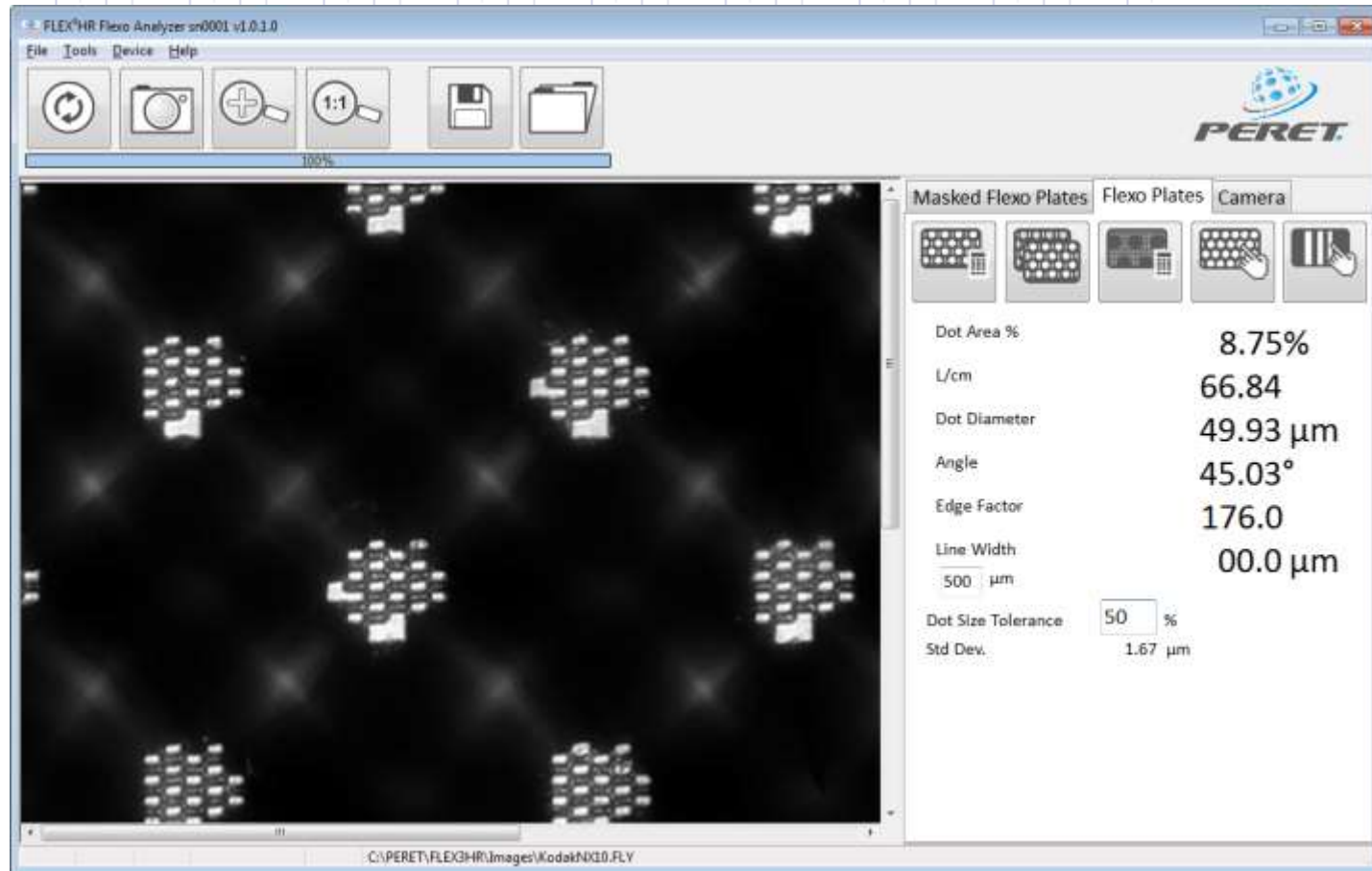




# High Screen Rulings require High Resolution Images



# The evaluation of complex Dot Shapes require High Resolution Images



# FLEX<sup>3</sup>HR does and will never replace FLEX<sup>3</sup>PRO because FLEX<sup>3</sup>PRO offers:



- Screen rulings < 80L/cm
- 3D Images
- Elastomeric Plates
- Print analysis
- Production control statistics
- FLEYE+ Reporting
- Large Format Version XXL
- Sleeve version ROUNT