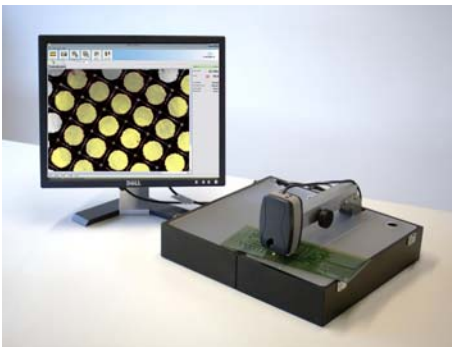


FAG FLEX³

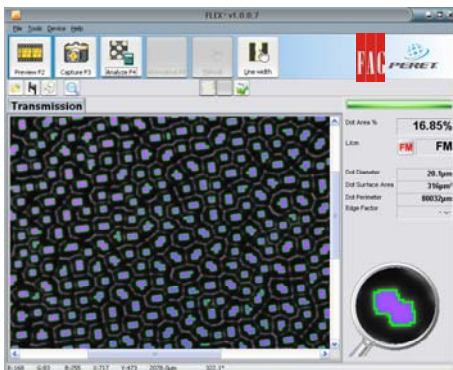
FAG FLEX³ PRO

Why invest in the FAG FLEX³?



We are pleased to announce the introduction of the FAG FLEX³ plate reader. FAG FLEX³ is a portable plate reader for transparent flexo plates, engraved LAMS, and film.

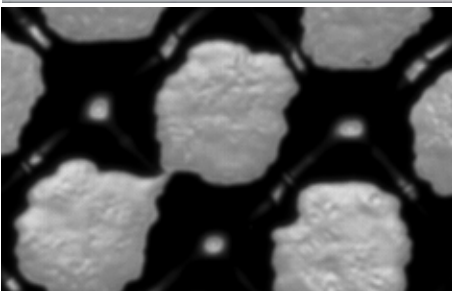
The FAG FLEX³ reads all transparent flexo plates from 0.5% to 98% within a screen ruling range of 50 Lines/Inch up to 300 Lines/Inch. Also the total dot surface area in % of stochastic screens and hybrid screens can be measured.



The line width function of FAG FLEX³ can be used to measure positive and negative lines.

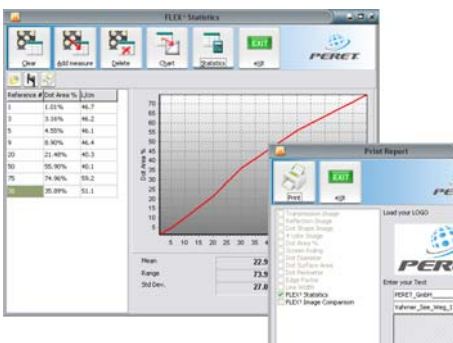
A high quality industrial 1.3M Pixel BW USB2.0 camera delivers sharp images, which are analyzed by advanced algorithms to obtain a precise, repeatable measurement result.

FAG FLEX³ images are exchangeable between devices around the world as all necessary information is part of the image.



A simple to use statistic function and the print report feature makes FAG FLEX³ the adequate utility to control the quality and stability of the plate manufacturing process.

A mouse -ruler can be used to measure any distance or angle inside the image.



A calibration TARGET on Glass always guaranties a perfect calibrated device.

The software is available in English, German, Spanish, French, and Italian language.

TECHNICAL FEATURES

Function	Specification
Dot Area %	0.5% .. 98% in 0.01%
Screen ruling	50L/inch..300L/Inch Auto / Fixed
Dot diameter	0.1 μ m / 0.1mil
Dot surface area	1 μ m ² / 1mil ²
Dot Perimeter	μ m / mil
Edge Factor	0.1%
Line Width	0.1 μ m / 0.1mil
Repeatability	
Dot area % regular screening	+/- 0.2%
Dot area % stochastic screening	+/- 0.2%
Screen ruling	+/- 1 L/cm
Line width measurement	1 μ m
Inter Instrument Agreement	TBD
Device	Specification
Camera	1.3MPixel BW – USB2.0
Resolution	Typ. 1450PPI ~ 1.7 μ m / Pixel
Field of view	Approx. 2.2mm x 1.8mm rectangular
Illumination	Transmission white LED
Operating System	Windows XP SP3, Windows 7
Computer Hardware requirements	Video resolution > 800x600 recommended 1600x1200 2GB RAM recommended USB2.0 port
Operating Size	Measurement table : approx 42 x 38cm Height : approx. 21cm
Transport size	LxWxH : approx. 38cm x 21 cm x 15cm
Weight	Approx. 4.5kg

Composition and printing errors excepted. All technical specifications, features and use are subject to change without notice.

