

FAG

of Switzerland

FAG Modular Blanks Processor MBP

Add value to your print products



- *Check the image automatically for defects, check Braille printing, divert faulty products*
- *Imprint numbers and codes*
- *Put on labels, tags and invisible security features*

Single Copies and Blanks

New Challenges

Verified quality leads to sustained customer loyalty



Stay ahead of the competition

- **Printers** have to cope with constantly rising requirements. Not only is the highest and guaranteed print quality demanded, but also a number of additional services concerning the enhancement of products in the postpress operations. Printers have to become *full service providers*.
- **Manufacturers** insist on the highest and faultless print quality for their product packaging. At the point of sale all packaging must be absolutely identical. Manufacturers protect and inspect their products along the entire production chain from folding box production, charging, and delivery to the retailers and consumers by means of imprints, encodings, holograms and RFID-tags.
- There is a growing number of products in the field of **advertising and security printing** where high-quality print products have to be completed or equipped with individual or serial imprints, with codes or labels.

Postpress inspection of print quality. Digital, automatic, reliable, fast and cost-effective. Check Braille. Deliver and guarantee 100% quality!

With small-format end products you can inspect trimmed single copies or die-cut blanks!

Why inspect single copies?

With small-format end products inspection of single copies has decisive advantages: Not the entire printed sheet but only the respective faulty single copy is rejected! That means in effect, the larger the printed sheet, the higher the number of copies on it, the more expensive the substrate and the more expensive the printing and finishing, the greater the benefits.

Base Module FAG Modular Blanks Processor MBP

The **FAG** Blanks Processor is the mechanical basis of the modular **FAG** System for quality inspection, imprinting, adding labels etc. on single copies.

Products of small size such as single copies, labels, die-cut blanks and even embossed final or intermediate products are positioned by a precise feeder on to a transport and processing table. On this table, depending upon the chosen final layout of this modular system, products are inspected, faulty products diverted to a second pile, and imprints, numbering or labels are added.



Modular Technology

Processing Module 1 - Quality Inspection

Products passing along the processing table of the base module are scanned for print quality by a high resolution camera. Products identified as defective are delivered separately from accepted products in a second auxiliary pile.

Inspection comprises:

- Hickeys
- Smearing
- Doubling
- Inking
- Registration

Advantages: 100% inspected and guaranteed quality when delivering products. Only faultless products are further processed.

Processing Module 2 - Braille

The new **FAG BrailleScan** can read Braille texts up to a maximum size of 40 x 120 mm. They are translated into plain text and compared with a text input by the user.

Advantages: Potentially serious consequences caused by Braille "typing errors" (liability) on packages and labels are prevented.

Processing Module 3 - Inkjet Imprint System

High definition Inkjet print heads for imprints, numbering, barcodes, addresses etc. in a resolution up to the fineness of a 4pt character.

For serial and/or variable imprints. Advanced print heads for conventional as well as UV-inks.

Advantages: Cost-effective imprinting of all types of information on the widest variety of end products.

Processing Module 4 - Label applicator

A highly-precise label applicator on the process table of the base module adds all types of self-adhesive labels to the final product.

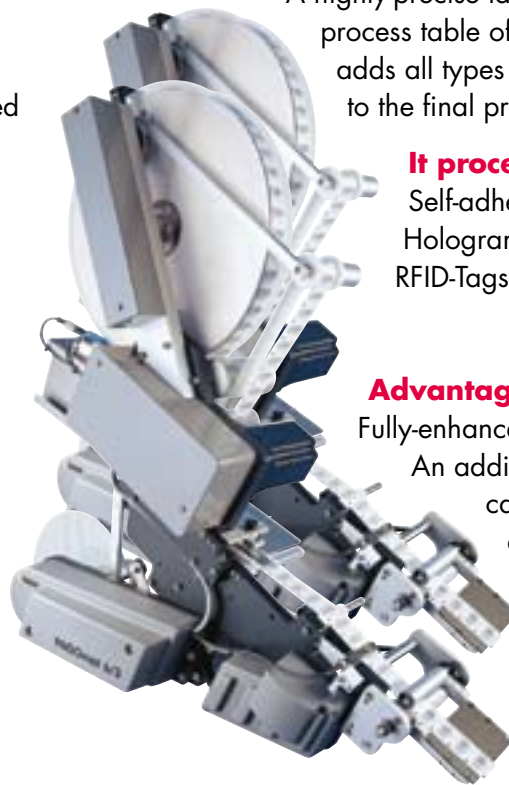
It processes:

Self-adhesive labels,
Holograms,
RFID-Tags ...

Advantages:

Fully-enhanced end products.

An additional benefit you can offer your customers and expand your value-adding chain.



Label applicator



Transport line, process table



Gate to divert faulty products



Stacker



Technical Data

Base Module

FAG Modular Blanks Processor MBP

- Max. product size 500 x 400 mm
- Min. product size 150 x 150 mm
- Substrate thickness 0.4 – 0.7 mm
- Max. production speed 150 m/min
- Dimensions ca. 5,100 x 2,230 x 2,450 mm

Module 1

- Image inspection system

Module 2

- Braille checking system
FAG Braille Scan

Module 3

- Inkjet imprinting system

Module 4

- Label applicator



of Switzerland

FAG GRAPHIC SYSTEMS S.A.

3, rue de la Vigie
CH-1003 Lausanne

Telephone: +41 21 343 23 23

e-mail: info@fag.ch

Internet: www.fag.ch