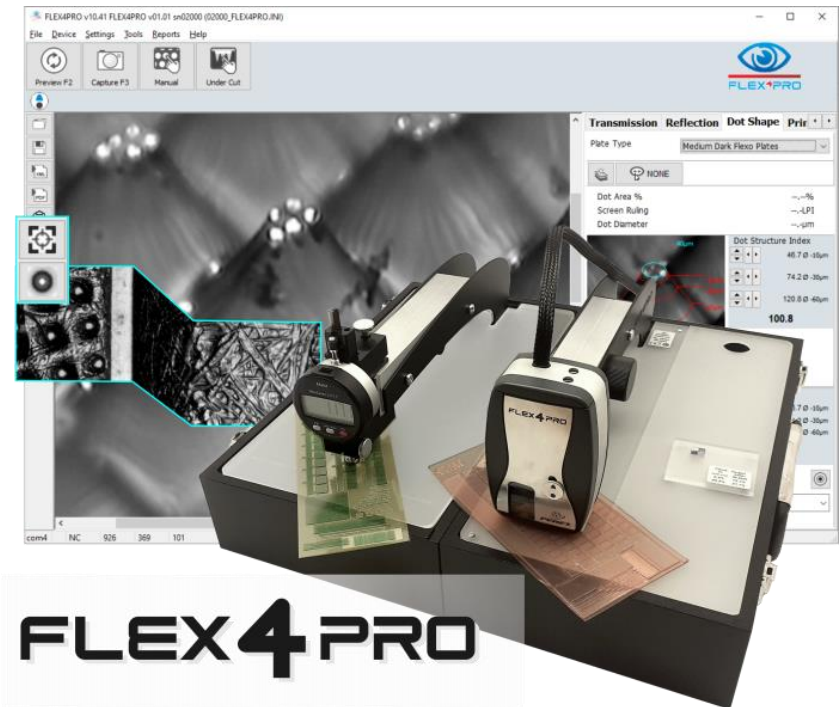


What's new

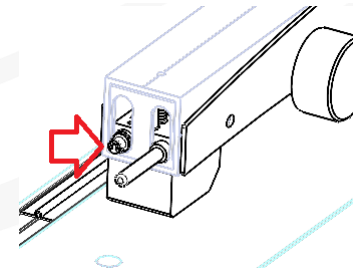
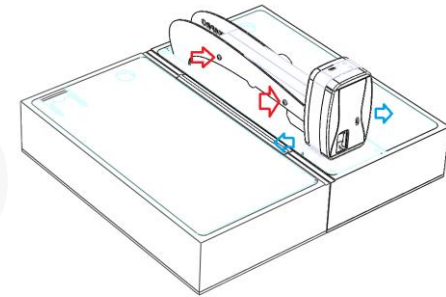
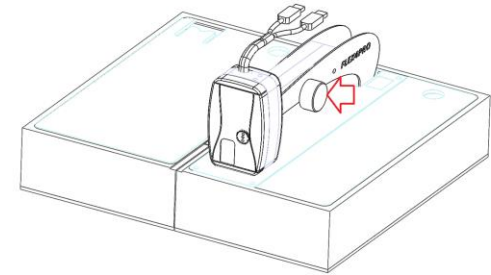


www.fag.ch



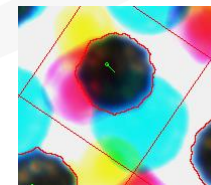
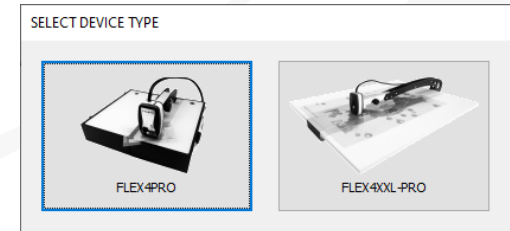
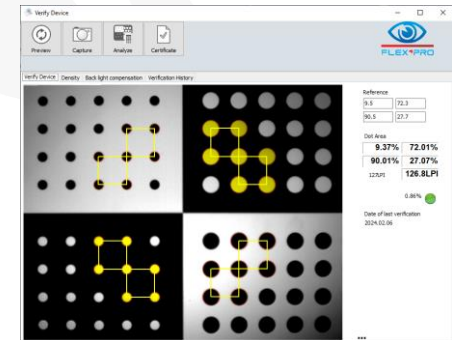
The design facelift for more look and feel improves handling and life time.

1. The Lifting mechanism for the sensor head is supported by additional bearings making it move smooth.
2. Long steel guides facilitate the adjustment of the measuring position
3. The jack connector between Sensor head and base unit has been replaced by a more reliable 5 pin connector



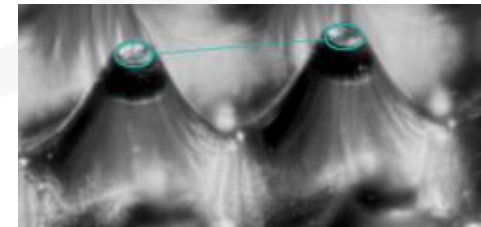
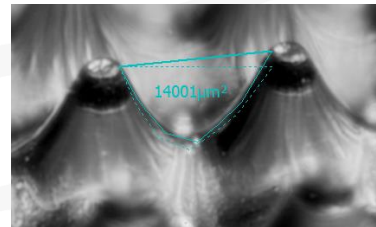
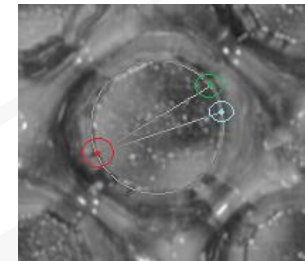
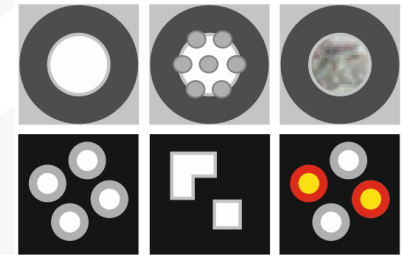
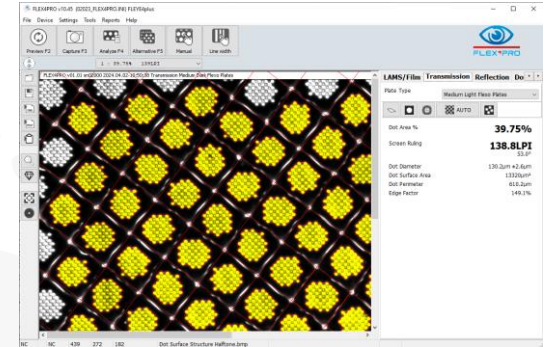
The completely newly developed electronics make the device fit for the next few years

1. The new microprocessor technology is compatible with Windows 11 and enables a firmware upgrade in the field.
2. The new LED lighting provides more light intensity and precision, the intensity can be controlled directly by the microprocessor improving the inter instrument agreement
3. The new LED Intensity control results in a perfect measurement agreement between the use of the Sensor on the standard PRO box and on the XXL Table.
4. The additional IR lighting makes black ink detection on print samples possible.



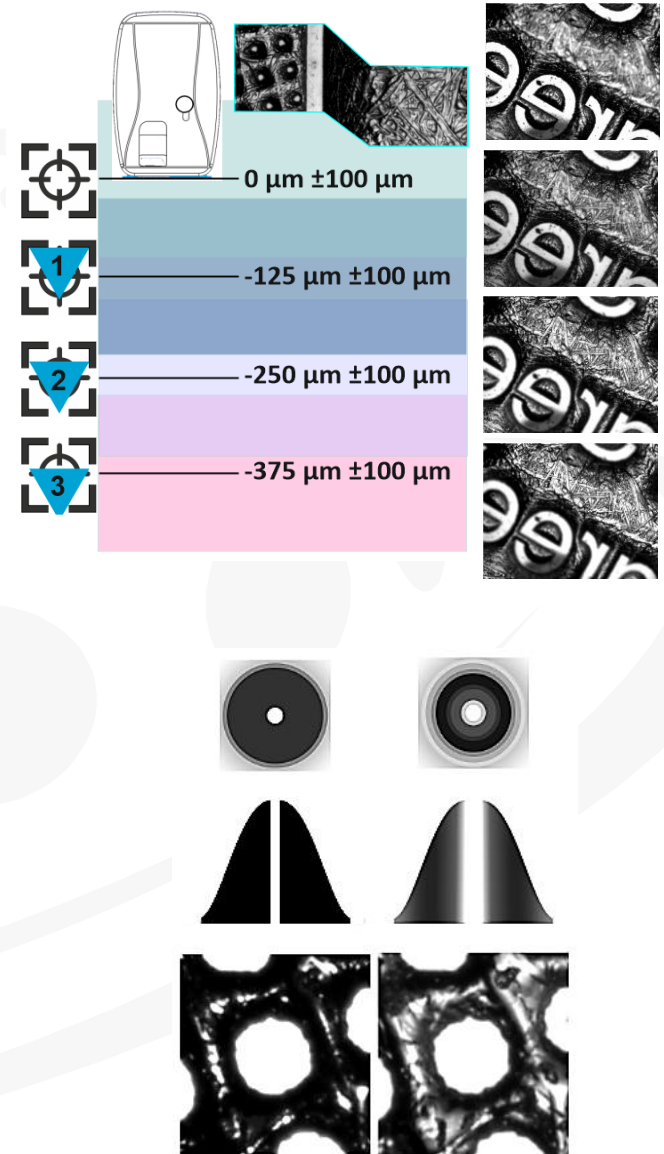
Redesigned Software from the scratch

1. The new look and feel while keeping it easy and simple.
2. New analysis algorithms and new parameterization of the algorithm makes measurement results more accurate and repeatable
3. Additional Plate Types and manual measurement features makes it possible to measure also difficult samples.
4. Additional 3D measurement functions



High Lights

1. Move the focus of the camera down to see details of the floor.
2. Select the high contrast edge transmission optics for accurate readings
3. Select the gray details transmission optics to evaluate plate cleaning



System verification

1. Verification and remote calibration in the field.
2. Density verification and calibration in the field
3. Backlight calibration



New optional RELIX4

